

**ERMCO**

EUROPEAN READY MIXED CONCRETE ORGANIZATION  
ASSOCIATION EUROPEENNE DU BETON PRET A L'EMPLOI  
EUROPÄISCHER TRANSPORTBETONVERBAND

**READY-MIXED CONCRETE  
INDUSTRY STATISTICS**

**YEAR 2011**

**JUNE 2012**

This Page Intentionally Left Blank

## READY-MIXED CONCRETE INDUSTRY STATISTICS YEAR 2011

These statistics have been compiled for the year 2011 from ERMCO Members' annual returns as of 30 June 2012

### CONTENTS

<b>Table 0</b>	<b>ERMCO data collection form</b>
<b>Table 1</b>	<b>National data</b>
<b>Table 2</b>	<b>Materials</b>
<b>Table 3</b>	<b>Product characteristics</b>
<b>Table 4</b>	<b>Overall data and trend comparison</b>
<b>Table 5</b>	<b>Industry organization (ERMCO Members only)</b>
<b>Table 6</b>	<b>Product development (ERMCO Members only)</b>
<b>Table 7</b>	<b>Delivery method and vehicles (ERMCO members only)</b>
<b>Table 8</b>	<b>Sector development (ERMCO members only)</b>

#### **ERMCO Members**

Full ERMCO Members are the National Associations of ready mixed concrete producers of: Austria, Belgium, Czech Republic, Denmark, Finland, France, Germany, Ireland, Israel, Italy, Netherlands, Norway, Poland, Portugal, Rumania, Slovakia, Spain, Sweden, Switzerland, Turkey, United Kingdom.

Data are presented separately for ERMCO Members belonging to the EU Countries, for all Full ERMCO Members, for Corresponding Member Russia and Associated Members USA and Japan.

Note: The type of data collected in Germany has changed in 2010 therefore some data are not directly comparable to previous years. When this situation applies, the n.c. (not comparable) symbol is used.

#### **Disclaimer**

The information contained in this publication is derived from many different sources. All reasonable steps have been taken to ensure that all the information in this document is from a reliable and reputable source and is accurate. However, readers are advised that ERMCO takes no responsibility for the manner in which this information is subsequently used.

*For further information, contact us:*

*ERMCO - European Ready Mixed Concrete Organization*

*Boulevard du Souverain 68 - 1170 Brussels - Belgium*

*Tel: +32 (2) 6455212*

*E-mail: [secretariat@ermco.eu](mailto:secretariat@ermco.eu)*

*Website: <http://www.ermco.eu>*

**JUNE 2012**

**TABLE 0**  
**Data collection form**

Country:   
Prepared by:   
Date:

				Comments (*)	Y2008	Tolerance	
						-20%	20%
<b>A</b>	<b>Total number of ready-mixed concrete producers</b>						
A1	Country						
A2	Members						
<b>B</b>	<b>Total number of employees/workers including indirect employees, if any (**)</b>						
B1	Country						
B2	Members						
<b>C</b>	<b>Turnover including transport – (millions of €)</b>						
C1	Country		millions €				
C2	Members		millions €				
<b>D</b>	<b>Total ready-mixed concrete production (millions of m<sup>3</sup>)</b>						
D1	Country		millions m <sup>3</sup>				
D2	Members		millions m <sup>3</sup>				
<b>E</b>	<b>Plants</b>						
E1	Total number of plants - Country						
E2	Total number of plants - Members						
E21	% of static mixing plants		%				
E22	% of dry batching plants		%				
	<b>Total</b>		%				
<b>Data F to N refer to total concrete production at national level</b>							
<b>F</b>	<b>Concrete</b>						
F1	Total production including site-mixed and precast (millions of m <sup>3</sup> )		millions m <sup>3</sup>				
F2	% of ready-mixed concrete		%				
F3	% of site-mixed concrete		%				
F4	% of precast concrete		%				
	<b>Total</b>		%				
<b>G</b>	<b>Cement</b>						
G1	Total cement consumption (millions of tons)		millions t				
G2	% to ready-mixed concrete		%				
G3	Average cement content in ready-mixed concrete (kg/m <sup>3</sup> )		kg/m <sup>3</sup>				
<b>H</b>	<b>Addition</b>						
H1	Most commonly used addition						
H2	Total consumption of addition I (millions of tons)		millions t				
H3	Average addition content in ready-mixed concrete (kg/m <sup>3</sup> )		kg/m <sup>3</sup>				
<b>J</b>	<b>% ready-mixed concrete production per strength class (N/mm<sup>2</sup>)</b>						
J1	< C16/20		%				
J2	C16/20 C20/25		%				
J3	C25/30 (C28/35) C30/37		%				
J4	>= C35/45		%				
	<b>Total</b>		%				
<b>L</b>	<b>% per consistence class (***)</b>						
L1	S1		%				
L2	S2 - S3		%				
L3	S4 - S5		%				
L4	Self-Compacting Concrete (SCC)		%				
	<b>Total</b>		%				
<b>M</b>	<b>Delivery method</b>						
M1	% Company vehicles		%				
M2	% Outside contractors		%				
M3	% Customer collection		%				
	<b>Total</b>		%				
<b>N</b>	<b>Truck, Mixer, Pumps</b>						
N1	Total number of truck mixers/delivery vehicles						
N2	% under 8 m <sup>3</sup>		%				
N3	% 8 - 10 m <sup>3</sup>		%				
N4	% over 10 m <sup>3</sup>		%				
	<b>Total</b>		%				
N5	pumped concrete as % of total ready-mixed concrete production		%				
N6	Total number of pumps						

**NOTES**

(\*) Write E if the value is estimated.

(\*\*) Including indirect workers, e.g. self-employed truckmixer drivers

(\*\*\*) For consistence evaluate classes (flow table test): S1=F1, S2-S3=F2-F3, S4-S5=F4-F5, SCC=F6+SCC

**TABLE 1**  
**Members' and country data**

Country	Total ERMCO Members millions of m <sup>3</sup>			Total rmc country millions of m <sup>3</sup>			ERMCO Members share of national production, %			Population <sup>1</sup> millions			Production per capita m <sup>3</sup> /capita		
	2009	2010	2011	2009	2010	2011	2009	2010	2011	2009	2010	2011	2009	2010	2011
Austria	9,3	9,2	9,5	10,3	10,2	10,5	90,291	90,196	90,476	8,3	8,4	8,4	1,238	1,221	1,254
Belgium	6,0	6,5	7,6	10,4	10,8	11,6	57,692	60,185	65,086	10,7	10,8	10,8	0,975	1,004	1,070
Czech Republic	5,7	5,0	5,8	7,3	6,4	7,5	78,438	78,125	77,333	10,4	10,5	10,5	0,703	0,611	0,714
Denmark	1,6	1,5	1,8	1,8	1,7	2,1	88,889	88,235	85,714	5,5	5,5	5,5	0,329	0,308	0,379
Finland	1,9	2,3	2,7	2,0	2,6	3,0	95,000	88,462	90,000	5,3	5,3	5,4	0,377	0,488	0,561
France	29,7	29,8	33,1	37,0	37,4	41,3	80,270	79,679	80,145	64,0	64,4	64,7	0,578	0,581	0,638
Germany <sup>2</sup>	24,8	24,3	25,7	37,7	42,0	48,0	65,782	57,857	53,542	82,2	81,8	81,8	0,459	0,513	0,587
Ireland	2,8	2,2	2,0	3,8	2,7	2,4	73,684	81,481	83,333	4,4	4,5	4,5	0,863	0,607	0,537
Italy	22,0	19,0	17,8	58,8	54,4	51,8	37,415	34,926	34,363	59,6	60,0	60,3	0,986	0,906	0,858
Netherlands	6,7	4,9	6,8	9,3	8,1	8,8	72,043	60,494	77,273	16,4	16,5	16,6	0,567	0,491	0,531
Poland	7,2	7,6	9,7	17,7	18,6	23,7	40,944	40,860	40,928	38,1	38,1	38,2	0,463	0,488	0,621
Portugal	6,7	6,0	5,0	8,5	7,5	6,1	78,824	80,000	81,967	10,6	10,6	10,6	0,801	0,706	0,573
Slovakia	1,7	1,4	1,4	2,6	2,4	2,3	64,231	58,333	60,086	5,4	5,4	5,4	0,481	0,443	0,429
Spain	39,9	31,2	23,8	49,0	39,1	30,8	81,410	79,790	77,341	45,3	45,8	46,0	1,081	0,853	0,669
Sweden	2,3	2,7	2,9	2,8	3,3	3,3	82,143	81,818	87,879	9,2	9,3	9,3	0,305	0,357	0,353
United Kingdom	14,4	14,3	15,3	15,8	15,7	16,7	91,139	91,083	91,617	61,2	61,6	62,0	0,258	0,255	0,269
<b>Total/Average EU</b>	<b>182,7</b>	<b>167,9</b>	<b>170,8</b>	<b>274,7</b>	<b>262,9</b>	<b>269,9</b>	<b>66,498</b>	<b>63,863</b>	<b>63,300</b>	<b>436,6</b>	<b>438,4</b>	<b>440,1</b>	<b>0,629</b>	<b>0,600</b>	<b>0,613</b>
Israel	6,7	7,5	8,0	9,5	11,0	11,0	70,526	68,182	72,727	7,3	7,3	7,3	1,301	1,507	1,507
Norway	2,6	2,7	3,2	2,9	3,0	3,5	90,690	90,000	92,045	4,7	4,8	4,9	0,612	0,625	0,725
Switzerland	11,0	11,2	11,9	11,6	11,8	12,5	94,828	94,915	95,200	7,6	7,7	7,8	1,528	1,532	1,605
Turkey	40,0	47,5	54,0	66,4	79,7	90,0	60,241	59,598	60,000	70,6	71,5	72,6	0,941	1,114	1,240
<b>Total/Average ERMCO</b>	<b>243,0</b>	<b>236,8</b>	<b>248,0</b>	<b>365,1</b>	<b>368,4</b>	<b>386,9</b>	<b>66,557</b>	<b>64,277</b>	<b>64,092</b>	<b>526,8</b>	<b>529,7</b>	<b>532,6</b>	<b>0,693</b>	<b>0,695</b>	<b>0,726</b>
Russia	5,0	4,0	4,0	45,0	40,0	40,0	11,111	10,000	10,000	142,0	141,9	141,9	0,317	0,282	0,282
USA	<b>157,0</b>	118,0	120,0	<b>243,0</b>	197,0	203,0	<b>64,609</b>	59,898	59,113	<b>302,2</b>	<b>302,2</b>	<b>302,2</b>	<b>0,804</b>	<b>0,652</b>	<b>0,672</b>
Japan	77,0	75,0	77,0	86,0	85,0	88,0	89,535	88,235	87,500	127,3	127,3	127,3	0,676	0,668	0,691

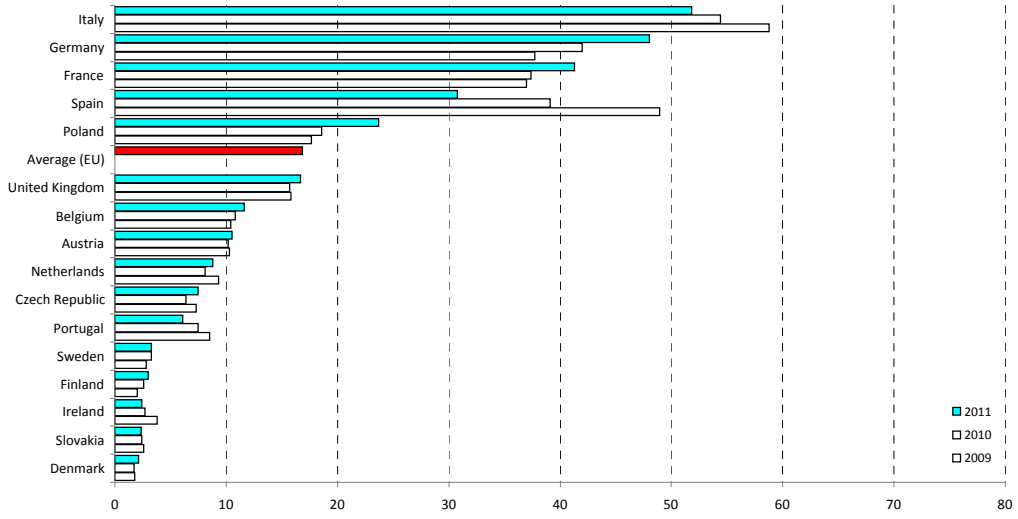
Country	Total production Members Yearly % change		Total production Country Yearly % change		ERMCO share Yearly % change		Population Yearly % change		Production per capita Yearly % change	
	2010 vs 2009	2011 vs 2010	2010 vs 2009	2011 vs 2010	2010 vs 2009	2011 vs 2010	2010 vs 2009	2011 vs 2010	2010 vs 2009	2011 vs 2010
Austria	-1,1	3,3	-1,0	2,9	-0,1	0,3	0,4	0,2	-1,4	2,7
Belgium	8,3	16,2	3,8	7,4	4,3	8,1	0,8	0,8	3,0	6,5
Czech Republic	-12,7	16,0	-12,3	17,2	-0,4	-1,0	0,8	0,4	-13,1	16,7
Denmark	-6,3	20,0	-5,6	23,5	-0,7	-2,9	0,7	0,4	-6,2	23,0
Finland	21,1	17,4	30,0	15,4	-6,9	1,7	0,5	0,5	29,4	14,8
France	0,3	11,1	1,1	10,4	-0,7	0,6	0,6	0,5	0,5	9,8
Germany <sup>2</sup>	-2,0	5,8	11,4	14,3	-12,0	-7,5	-0,5	0,0	12,0	14,3
Ireland	-21,4	-9,1	-28,9	-11,1	10,6	2,3	1,1	0,4	-29,7	-11,5
Italy	-13,6	-6,3	-7,5	-4,8	-6,7	-1,6	0,7	0,5	-8,1	-5,2
Netherlands	-26,9	38,8	-12,9	8,6	-16,0	27,7	0,5	0,5	-13,3	8,1
Poland	5,1	27,6	5,3	27,4	-0,2	0,2	0,1	0,1	5,2	27,3
Portugal	-10,4	-16,7	-11,8	-18,7	1,5	2,5	0,1	0,1	-11,8	-18,7
Slovakia	-16,2	0,0	-7,7	-2,9	-9,2	3,0	0,2	0,2	-7,9	-3,1
Spain	-21,7	-23,7	-20,1	-21,3	-2,0	-3,1	1,2	0,4	-21,1	-21,6
Sweden	17,4	7,4	17,9	0,0	-0,4	7,4	0,8	0,9	16,9	-0,9
United Kingdom	-0,7	7,0	-0,6	6,4	-0,1	0,6	0,7	0,7	-1,3	5,7
<b>Average EU</b>	<b>-8,1</b>	<b>1,8</b>	<b>-4,3</b>	<b>2,7</b>	<b>-4,0</b>	<b>-0,9</b>	<b>0,4</b>	<b>0,4</b>	<b>-4,7</b>	<b>2,3</b>
Israel	<b>11,9</b>	<b>6,7</b>	15,8	0,0	-3,3	6,7	0,0	0,0	15,8	0,0
Norway	2,7	20,0	3,4	17,3	-0,8	2,3	1,3	1,2	2,1	15,9
Switzerland	1,8	6,3	1,7	5,9	0,1	0,3	1,4	1,1	0,3	4,8
Turkey	18,8	13,7	20,0	12,9	-1,1	0,7	1,3	1,5	18,5	11,3
<b>Average ERMCO</b>	<b>-2,6</b>	<b>4,7</b>	<b>0,9</b>	<b>5,0</b>	<b>-3,4</b>	<b>-0,3</b>	<b>0,6</b>	<b>0,5</b>	<b>0,3</b>	<b>4,5</b>
Russia	-20,0	0,0	-11,1	0,0	-10,0	0,0	-0,1	0,0	-11,0	0,0
USA	<b>-24,8</b>	1,7	<b>-18,9</b>	3,0	<b>-7,3</b>	-1,3	<b>0,0</b>	<b>0,0</b>	<b>-18,9</b>	<b>3,0</b>
Japan	-2,6	2,7	-1,2	3,5	-1,5	-0,8	0,0	0,0	-1,2	3,5

Legend: data in bold are estimated

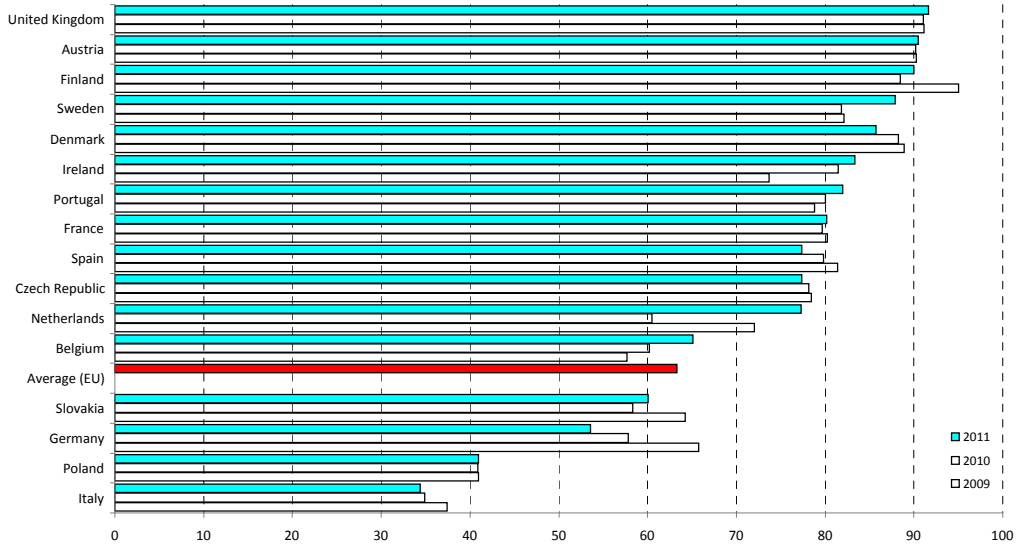
(1) Source EUROSTAT: <http://ec.europa.eu/eurostat>

(2) 2010 data not comparable with 2009

**Total rmc production country**  
[millions of m<sup>3</sup>]



**ERMCO Members production as % of national rmc production**  
[%]



**Contry rmc production per capita**  
[m<sup>3</sup>/capita]

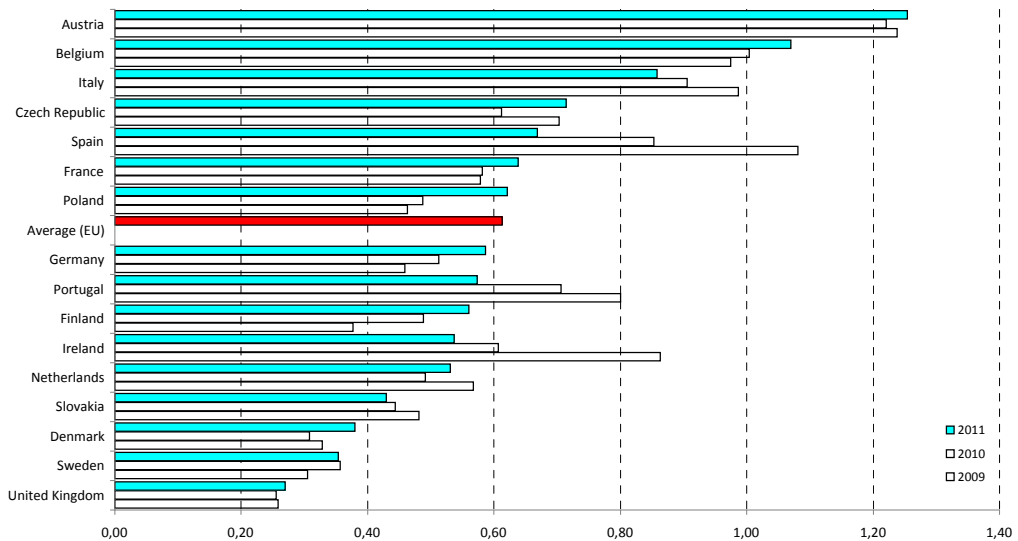


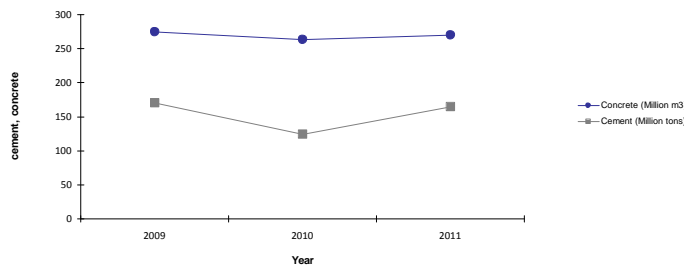
TABLE 2  
Materials

Country	Total cem. consumption millions of tons			% cement to ready-mix %			Average cement content kg/m <sup>3</sup>			Most used additions type			Total additions consumption millions of tons			Average addition content kg/m <sup>3</sup>		
	2009	2010	2011	2009	2010	2011	2009	2010	2011	2009	2010	2011	2009	2010	2011	2009	2010	2011
Austria	4.8	4.5	4.7	58.0	62.0	62.0	265	260	260	FA	FA/GGBS	FA-GGBS	0.60	0.67	0.70	40	45	45
Belgium	5.5	5.8	6.6	56.3	56.0	57.0	260	260	260	FA	FA	FA	-	0.02	0.02	20	20	20
Czech Republic	4.1	3.7	3.8	55.0	55.0	56.0	278	276	275	FA	FA	FA	0.55	0.59	0.33	52	56	57
Denmark	1.6	1.1	1.5	34.0	38.0	40.0	250	255	280	FA	FA	FA	0.17	0.15	0.18	55	55	55
Finland	1.4	1.9	2.0	50.0	50.0	50.0	345	345	345	FA	FA	FA	0.10	0.10	0.10	40	40	40
France	20.3	19.8	21.4	54.4	56.2	56.8	299	298	294	FA	FA	FA	0.45	0.50	0.60	90	90	90
Germany <sup>1</sup>	25.4	24.6	28.0	44.6	50.5	50.7	300	296	296	FA	FA	FA	1.90	1.90	1.90	50	45	40
Ireland	1.9	1.4	0.8	95.0	95.0	85.0	330	330	320	GGBS	GGBS	GGBS	0.25	0.20	0.10	-	-	42
Italy	37.0	33.9	32.8	48.5	49.0	49.0	315	305	310	FA	FA	FA	0.19	0.20	0.15	30	30	29
Netherlands	5.6	4.8	5.4	52.0	49.0	45.0	313	305	303	FA	FA	FA	0.13	0.13	0.45	57	57	60
Poland	15.1	15.3	18.7	33.0	34.9	34.9	282	288	288	FA	FA	FA	0.79	0.80	0.80	45	45	45
Portugal	6.2	5.8	4.9	35.0	37.0	31.5	230	260	240	FA	FA	FA	1.00	0.15	0.45	70	30	70
Slovakia	1.7	1.9	1.8	48.0	45.0	45.0	315	315	310	FA	FA	FA	0.20	0.24	0.23	55	55	55
Spain	28.7	22.4	20.2	49.0	49.0	44.0	295	295	289	-	-	FA	-	-	-	-	-	-
Sweden	2.2	2.3	2.3	55.0	53.0	53.0	378	378	378	FA	FA	FA	0.02	0.02	0.02	20	20	20
United Kingdom	8.5	9.0	9.6	50.0	55.0	54.0	220	250	250	GGBS/FA	FA/GGBS	GGBS	1.40	1.50	1.60	95	75	75
<b>Total/Average EU</b>	<b>170.0</b>	<b>124.3</b>	<b>164.4</b>	<b>48.2</b>	<b>63.4</b>	<b>48.7</b>	<b>293</b>	<b>292</b>	<b>291</b>				<b>7.8</b>	<b>7.2</b>	<b>7.6</b>	<b>719</b>	<b>663</b>	<b>743</b>
Israel	4.1	4.2	4.5	74.0	72.0	72.0	280	278	280	FA	FA	FA	0.50	0.50	0.50	100	100	100
Norway	1.6	1.7	1.9	67.5	69.0	71.0	368	378	378	MS	FA	FA	0.02	0.02	-	25	25	-
Switzerland	4.2	4.3	4.6	76.9	76.5	76.9	280	280	280	-	-	-	-	-	-	-	-	-
Turkey	41.2	47.7	52.3	36.0	49.0	55.0	290	295	290	FA	FA	FA,GGBS	1.00	1.00	1.50	50	50	50
<b>Total/Average ERMCO</b>	<b>221.0</b>	<b>182.2</b>	<b>227.7</b>	<b>47.1</b>	<b>60.2</b>	<b>51.4</b>	<b>292</b>	<b>293</b>	<b>291</b>				<b>9.3</b>	<b>8.7</b>	<b>9.6</b>	<b>894</b>	<b>838</b>	<b>893</b>
Russia	56.0	45.0	45.0	42.0	50.0	50.0	350	350	350	FA	-	-	-	-	-	-	-	-
USA	114.6	70.0	72.0	75.0	73.0	72.0	270	270	270	-	FA	FA	23.00	12.00	12.00	80	70	70
Japan	44.0	41.0	41.9	71.0	71.4	71.7	359	349	349	GGS	GGS	GGS	3.51	3.51	3.51	4	4	4

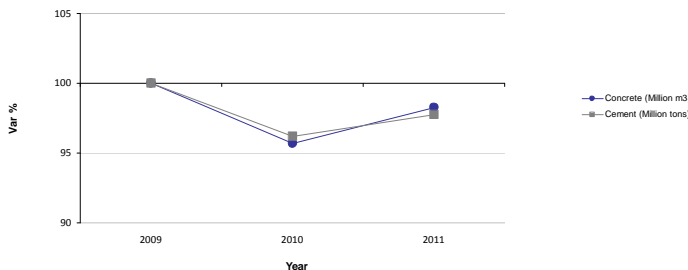
Country	Total cem. consumption Yearly % change		% cement to ready-mix Yearly % change		Average cement content Yearly % change		Total additions consumption Yearly % change		Average addition content Yearly % change	
	2010 vs 2009	2011 vs 2010	2010 vs 2009	2011 vs 2010	2010 vs 2009	2011 vs 2010	2010 vs 2009	2011 vs 2010	2010 vs 2009	2011 vs 2010
Austria	-6.3	4.4	6.9	0.0	-1.9	0.0	11.7	4.5	12.5	0.0
Belgium	5.5	12.9	-0.5	1.8	0.0	0.0	-	0.0	0.0	0.0
Czech Republic	-9.8	2.7	0.0	1.8	-0.7	-0.4	7.3	-44.9	7.7	1.8
Denmark	-31.3	34.5	11.8	5.3	2.0	9.8	-11.8	20.0	0.0	0.0
Finland	35.7	5.3	0.0	0.0	0.0	0.0	0.0	0.0	0.0	0.0
France	-2.5	8.1	3.3	1.1	-0.3	-1.3	11.1	20.0	0.0	0.0
Germany <sup>1</sup>	-3.1	13.8	13.2	0.4	-1.3	0.0	0.0	0.0	-10.0	-11.1
Ireland	-26.3	-42.9	0.0	-10.5	0.0	-3.0	-20.0	-50.0	-	-
Italy	-8.4	-3.2	1.0	0.0	-3.2	1.6	5.3	-25.0	0.0	-3.3
Netherlands	-14.3	12.5	-5.8	-8.2	-2.6	-0.7	0.0	246.2	0.0	5.3
Poland	1.6	21.8	5.7	0.0	2.1	0.0	0.6	0.0	0.0	0.0
Portugal	-6.5	-15.0	5.7	-14.9	13.0	-7.7	-85.0	200.0	-57.1	133.3
Slovakia	10.5	-3.7	-6.3	0.0	0.0	-1.6	20.0	-4.2	0.0	0.0
Spain	-21.7	-9.9	0.0	-10.2	0.0	-2.0	-	-	-	-
Sweden	4.5	0.0	-3.6	0.0	0.0	0.0	0.0	0.0	0.0	0.0
United Kingdom	5.6	6.5	10.0	-1.8	13.6	0.0	7.1	6.7	7.1	6.7
<b>Average EU</b>	<b>-26.8</b>	<b>32.2</b>	<b>31.5</b>	<b>-23.1</b>	<b>-0.1</b>	<b>-0.4</b>	<b>-7.5</b>	<b>6.3</b>	<b>-7.8</b>	<b>12.1</b>
Israel	2.4	7.1	-2.7	0.0	-0.7	0.7	0.0	0.0	0.0	0.0
Norway	6.5	13.3	2.2	2.9	2.7	0.0	0.0	-	0.0	-
Switzerland	2.4	7.0	-0.5	0.5	0.0	0.0	-	-	-	-
Turkey	15.8	9.5	36.1	12.2	1.7	-1.7	0.0	50.0	0.0	0.0
<b>Average ERMCO</b>	<b>-17.6</b>	<b>25.0</b>	<b>27.8</b>	<b>-14.6</b>	<b>0.3</b>	<b>-0.6</b>	<b>-6.3</b>	<b>10.8</b>	<b>-0.5</b>	<b>4.0</b>
Russia	-19.6	0.0	19.0	0.0	0.0	0.0	-	-	-	-
USA	-38.9	2.9	-2.7	-1.4	0.0	0.0	-47.8	0.0	-12.5	0.0
Japan	-6.8	2.2	0.6	0.4	-2.8	0.0	0.0	0.0	0.0	-2.4

Legend: data in bold are estimated; data underscored source: CEMBUREAU  
(1) 2010 data not comparable with 2009  
FA = Fly Ash; SF = Silica Fume; GGBS = Ground Granulated Blastfurnace Slag; MS = MicroSilica;

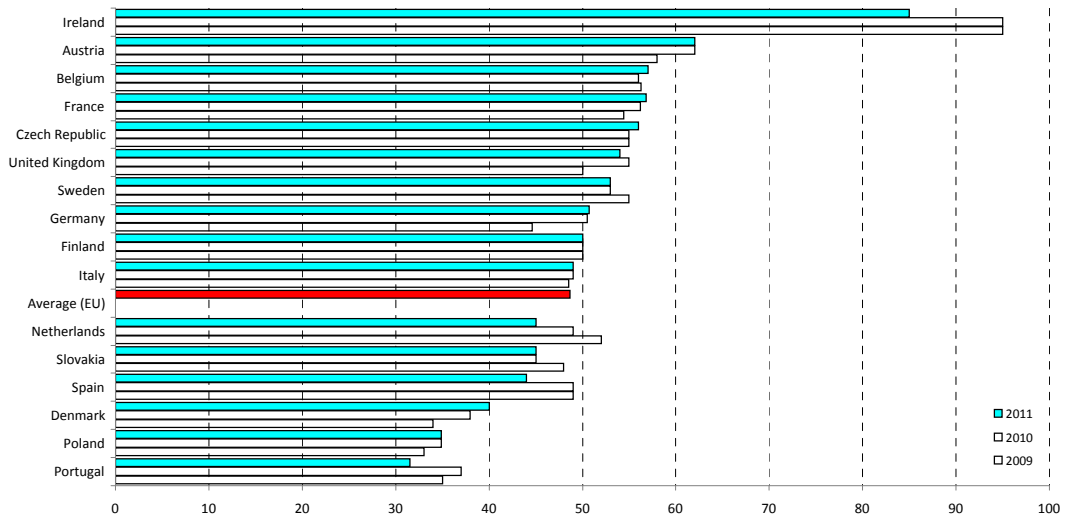
Concrete production and Cement consumption



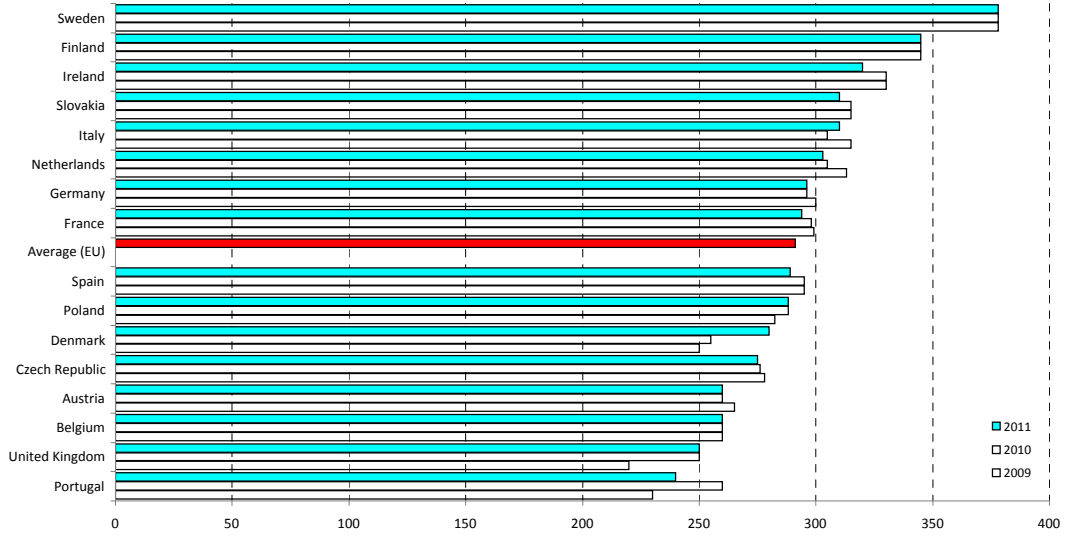
Yearly percentage variation



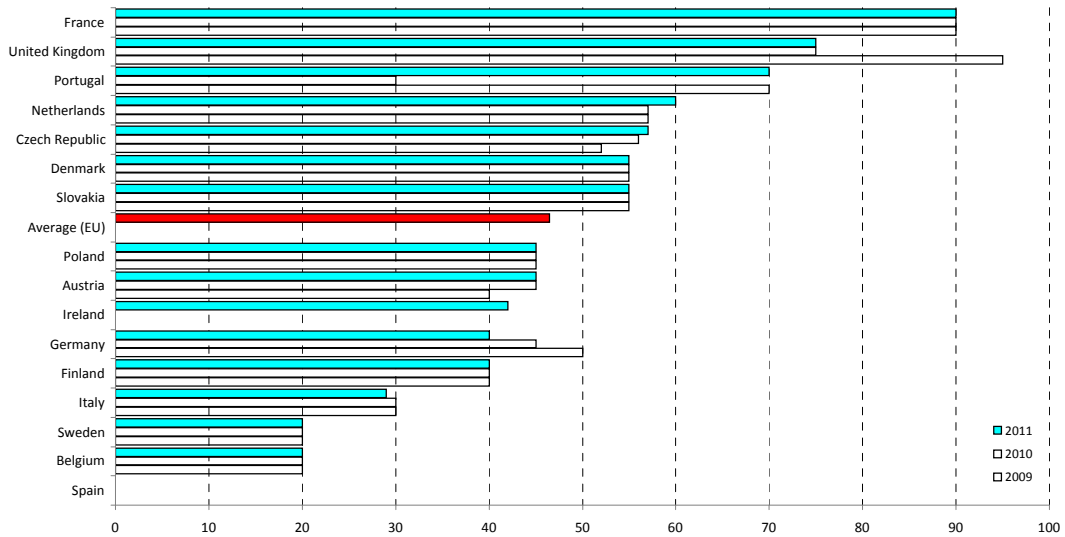
**Percentage cement to rmc**  
[%]



**Average cement content**  
[kg/m<sup>3</sup>]



**Average addition content**  
[kg/m<sup>3</sup>]





**TABLE 3**  
Product characteristics

Country	%Production by strength class Strength (N/mm <sup>2</sup> )								%Production by consistence class Slump class							
	< C16/20		C16/20 - C20/25		C25/30 - C30/37		≥ C35/45		S1		S2 - S3		S4 - S5		SCC	
	2010	2011	2010	2011	2010	2011	2010	2011	2010	2011	2010	2011	2010	2011	2010	2011
Austria	5	5	50	50	37	40	8	5	8	9	80	75	10	15	2	1
Belgium	0	0	10	10	58	58	32	32	10	10	45	45	45	45	1	1
Czech Republic	16	15	34	36	33	34	17	15	21	18	60	64	18	17	1	1
Denmark	5	4	50	47	38	40	7	9	5	5	49	49	11	11	35	35
Finland	0	10	10	25	60	55	30	10	3	3	48	48	48	48	1	1
France	2	2	64	43	30	49	4	6	1	8	66	71	28	16	5	5
Germany	10	9	21	20	56	56	13	15	<u>11</u>	<u>10</u>	<u>76</u>	<u>75</u>	<u>11</u>	<u>13</u>	<u>2</u>	<u>2</u>
Ireland	5	5	20	20	40	40	35	35	15	15	70	70	14	14	1	1
Italy	7	8	25	21	60	68	8	3	0	0	13	11	86	88	1	1
Netherlands	1	9	65	11	30	25	4	55	1	0	66	68	32	30	1	2
Poland	16	12	34	26	32	36	19	27	6	10	83	79	10	10	1	1
Portugal	12	10	57	40	25	40	6	10	0	0	82	78	17	20	1	2
Slovakia	19	16	25	28	34	38	22	18	15	18	70	60	15	21	0	1
Spain	<b>0</b>	5	<b>0</b>	5	<b>95</b>	80	<b>5</b>	10	<b>0</b>	1	<b>10</b>	5	<b>90</b>	93	<b>0</b>	1
Sweden	0	0	10	10	50	50	40	40	0	0	33	33	60	60	7	7
United Kingdom	11	11	25	25	54	54	10	10	10	10	71	71	17	17	2	2
<b>Average EU</b>	<b>6</b>	<b>7</b>	<b>29</b>	<b>24</b>	<b>54</b>	<b>55</b>	<b>11</b>	<b>13</b>	<b>5</b>	<b>6</b>	<b>49</b>	<b>51</b>	<b>44</b>	<b>40</b>	<b>2</b>	<b>2</b>
Israel	1	1	7	7	72	72	20	20	0	0	2	2	97	97	1	1
Norway	0	0	7	7	81	82	12	11	1	1	0	0	95	95	4	4
Switzerland	-	-	-	-	-	-	-	-	-	-	-	-	-	-	-	-
Turkey	2	2	56	16	31	78	12	4	2	2	39	39	58	58	1	1
<b>Average ERMCO</b>	<b>5</b>	<b>6</b>	<b>34</b>	<b>22</b>	<b>49</b>	<b>61</b>	<b>11</b>	<b>11</b>	<b>4</b>	<b>5</b>	<b>45</b>	<b>46</b>	<b>49</b>	<b>47</b>	<b>2</b>	<b>2</b>
Russia	5	5	5	5	70	70	20	20	2	2	17	17	80	80	1	1
USA	<b>5</b>	40	<b>60</b>	25	<b>20</b>	25	<b>15</b>	10	-	-	-	-	-	-	<b>2</b>	1
Japan	1	1	39	39	47	47	13	13	0	0	42	42	57	57	1	1

Legend: data in bold are estimated  
data underscored are referred for consistence evaluate classes (flow table test): S1=F1, S2-S3=F2-F3, S4-S5=F4-F5, SCC=F6+SCC

**Production by strength class**



**Production by consistence class**

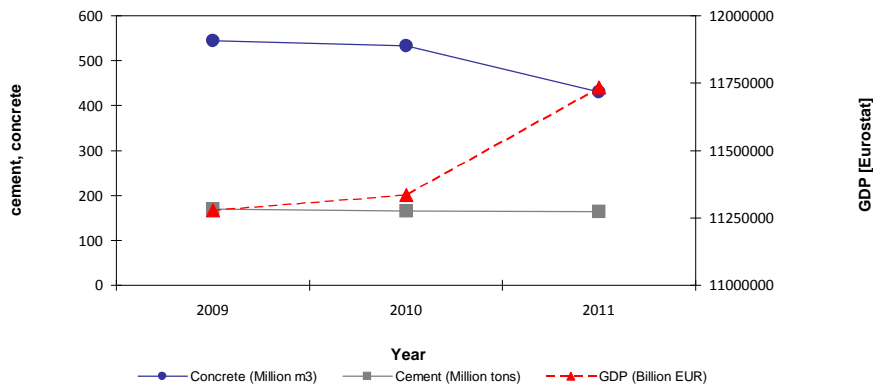


**TABLE 4**  
**Overall data and trend comparison**

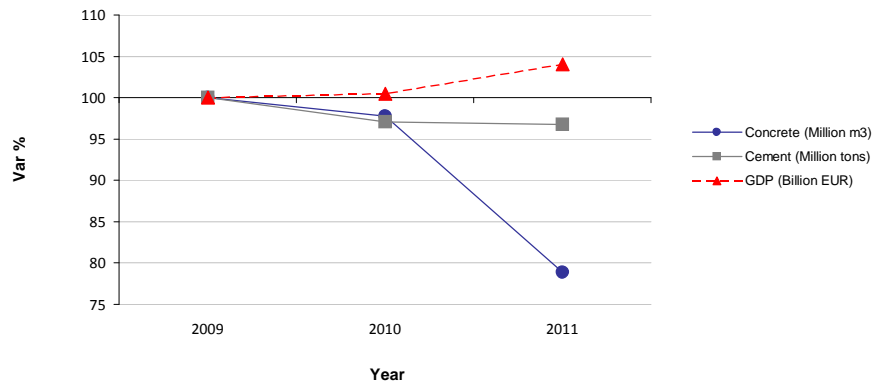
Country	Concrete production <sup>1</sup> millions of m <sup>3</sup>			Cement consumption millions of tons			Gross Domestic Product <sup>2</sup> millions of €		
	2009	2010	2011	2009	2010	2011	2009	2010	2011
Austria	15,0	15,0	15,0	4,8	4,5	4,7	271974	281179	294665
Belgium	18,0	18,0	19,0	<u>5,5</u>	<u>5,8</u>	<u>6,6</u>	336297	348110	354700
Czech Republic	13,0	11,6	11,0	<u>4,1</u>	<u>3,7</u>	<u>3,8</u>	147026	145324	151784
Denmark	3,5	3,4	4,1	1,6	1,1	1,5	221416	226887	237959
Finland	3,0	4,0	4,6	1,4	1,9	2,0	170159	178955	184852
France	55,0	54,0	59,0	20,3	19,8	21,4	1872356	1917124	1970150
Germany	69,4	71,3	80,9	25,4	24,6	28,0	2346900	2476800	2570800
Ireland	4,0	3,2	2,8	<u>1,9</u>	<u>1,4</u>	<u>0,8</u>	167400	159906	161034
Italy	86,0	68,5	65,2	<u>37,0</u>	<u>33,9</u>	<u>32,8</u>	1488599	1547117	1559862
Netherlands	16,6	<b>16,6</b>	<b>16,6</b>	5,6	4,8	5,4	573456	580795	595318
Poland	35,3	33,8	43,1	15,1	15,3	18,7	369065	322679	369882
Portugal	17,0	15,0	10,0	6,2	5,8	4,9	166981	170865	169890
Slovakia	3,3	3,2	3,0	1,7	1,9	1,8	61237	65422	67945
Spain	<b>170,0</b>	<b>170,0</b>	60,0	28,7	22,4	20,2	1047059	1047103	1058785
Sweden	5,0	5,0	5,0	2,2	2,3	2,3	316500	310467	362894
United Kingdom	30,8	28,5	30,5	8,5	9,0	9,6	1721960	1571205	1642515
<b>Total/Average EU</b>	<b>544,9</b>	<b>521,1</b>	<b>429,8</b>	<b>170,0</b>	<b>124,3</b>	<b>164,4</b>	<b>11278385</b>	<b>11349938</b>	<b>11753034</b>
Israel	10,4	12,0	12,0	4,1	4,2	4,5	142960	142960	142960
Norway	4,2	4,2	4,9	1,6	1,7	1,9	306095	271837	300697
Switzerland	-	12,1	0,0	<u>4,2</u>	<u>4,3</u>	<u>4,6</u>	336898	364363	407229
Turkey	75,0	90,0	100,0	<u>41,2</u>	<u>47,7</u>	<u>52,3</u>	440000	554000	590000
<b>Total/Average ERMCO</b>	<b>634,5</b>	<b>639,4</b>	<b>546,7</b>	<b>221,0</b>	<b>182,2</b>	<b>227,7</b>	<b>12504339</b>	<b>12683098</b>	<b>13193921</b>
Russia	72,0	65,0	65,0	56,0	45,0	45,0	<b>949530</b>	<b>949530</b>	<b>949530</b>
USA	<b>378,0</b>	<b>378,0</b>	270,0	<b>114,6</b>	<b>70,0</b>	72,0	<b>13220020</b>	<b>13220020</b>	<b>13220020</b>
Japan	121,0	119,0	123,0	44,0	41,0	41,9	<b>3243372</b>	<b>3961799</b>	<b>4409153</b>

Legend: *data in bold are estimated; data underscored source: CEMBUREAU*  
 (1) Site mixed and precast included.  
 (2) Source EUROSTAT: <http://ec.europa.eu/eurostat>.

**Concrete production, cement consumption and GDP**



**Yearly percentage variation**



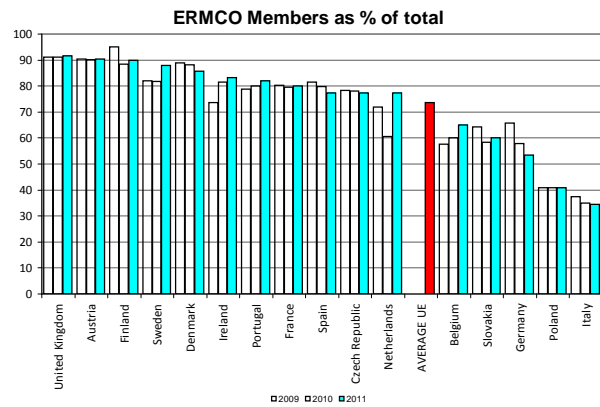
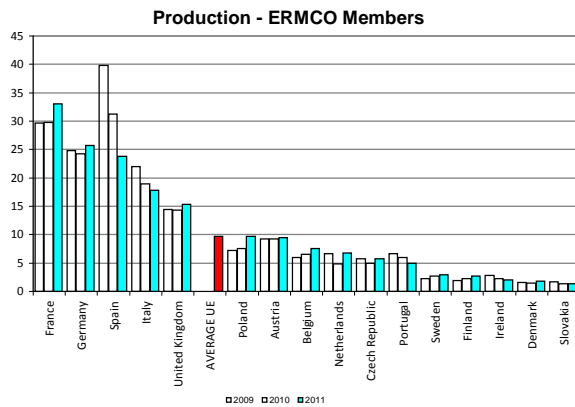
**TABLE 5**  
Industry organization (ERMCO Members only)

Country	Production millions m <sup>3</sup>			Producers			Plants			Employees			Turnover including delivery excluding tax - millions €		
	2009	2010	2011	2009	2010	2011	2009	2010	2011	2009	2010	2011	2009	2010	2011
Austria	9,3	9,2	9,5	127	130	125	219	221	218	1960	1985	1900	600	640	665
Belgium	6,0	6,5	7,6	50	59	54	126	135	135	-	2000	2000	350	360	490
Czech Republic	5,7	5,0	5,8	9	9	9	269	290	289	2068	2026	1804	440	398	440
Denmark	1,6	1,5	1,8	16	16	15	85	80	77	700	650	680	166	158	195
Finland	1,9	2,3	2,7	29	27	27	131	130	135	950	1000	1100	213	252	290
France	29,7	29,8	33,1	211	185	175	1322	1331	1333	11500	11600	11800	2950	2850	3130
Germany	24,8	24,3	25,7	361	336	330	1274	1261	1240	5600	5500	5600	1651	1585	1670
Ireland	2,8	2,2	2,0	89	93	76	175	150	200	4200	3500	3400	194	140	133
Italy	22,0	19,0	17,8	252	236	209	776	734	687	6000	4800	4300	1500	1200	1100
Netherlands	6,7	4,9	6,8	27	22	23	134	112	137	1700	1250	1400	440	<b>440</b>	<b>440</b>
Poland	7,2	7,6	9,7	17	17	25	209	209	230	1880	1880	1900	405	410	464
Portugal	6,7	6,0	5,0	25	26	23	190	198	178	1200	1000	800	370	350	290
Slovakia	1,7	1,4	1,4	11	10	10	94	93	90	524	575	527	118	89	83
Spain	39,9	31,2	23,8	<b>509</b>	559	397	1706	1642	1257	<b>16500</b>	<b>16500</b>	9000	<b>2400</b>	<b>2400</b>	1309
Sweden	2,3	2,7	2,9	33	31	31	160	158	158	2800	2600	2600	-	-	-
United Kingdom	14,4	14,3	15,3	19	19	18	920	870	850	6200	5800	5800	1590	1510	1510
<b>Total</b>	<b>168</b>	<b>154</b>	<b>156</b>	<b>1785</b>	<b>1775</b>	<b>1547</b>	<b>7790</b>	<b>7614</b>	<b>7214</b>	<b>63782</b>	<b>62666</b>	<b>54611</b>	<b>13387</b>	<b>12782</b>	<b>12209</b>
Israel	6,7	7,5	8,0	11	11	10	104	104	100	800	850	850	36	410	455
Norway	2,6	2,7	3,2	86	86	91	165	164	171	1410	1450	1600	357	379	490
Switzerland	11,0	11,2	11,9	190	190	190	367	371	371	-	-	-	-	-	-
Turkey	40,0	47,5	54,0	98	80	80	340	343	355	13000	13200	14500	1400	1660	1890
<b>Total</b>	<b>229</b>	<b>222</b>	<b>233</b>	<b>2170</b>	<b>2142</b>	<b>1918</b>	<b>8766</b>	<b>8596</b>	<b>8211</b>	<b>78992</b>	<b>78166</b>	<b>71561</b>	<b>15180</b>	<b>15231</b>	<b>15044</b>
Russia	5,0	4,0	4,0	25	25	25	140	120	120	860	800	800	600	500	500
USA	<b>157,0</b>	<b>118,0</b>	<b>120,0</b>	<b>960</b>	<b>960</b>	<b>1300</b>	<b>4000</b>	<b>4000</b>	<b>4000</b>	<b>80000</b>	<b>80000</b>	<b>70000</b>	<b>14400</b>	<b>14400</b>	<b>13000</b>
Japan	77,0	75,0	77,0	2653	2609	2811	2980	2906	2826	38727	36380	34810	-	-	8782

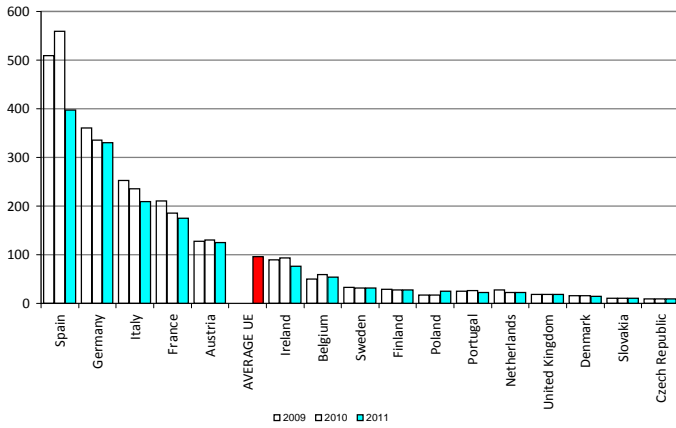
The next table gives ERMCO share of national figures

Country	Production ERMCO share %			Producers ERMCO share %			Plants ERMCO share %			Employees ERMCO share %			Turnover including delivery ERMCO share %		
	2009	2010	2011	2009	2010	2011	2009	2010	2011	2009	2010	2011	2009	2010	2011
Austria	90,3	90,2	90,5	84,7	86,7	86,2	85,9	90,2	90,8	87,5	90,2	88,4	89,6	90,1	90,5
Belgium	57,7	60,2	65,1	31,3	35,8	32,7	47,4	50,0	50,0	-	50,0	50,0	50,0	51,4	65,3
Czech Republic	78,4	78,1	77,3	31,0	31,0	31,0	59,8	64,4	64,2	82,7	82,0	76,8	78,6	78,0	77,2
Denmark	88,9	88,2	85,7	55,2	55,2	53,6	85,0	85,1	83,7	93,3	92,9	94,4	88,8	87,8	90,7
Finland	95,0	88,5	90,0	32,2	30,0	29,3	68,9	68,4	69,2	90,5	90,9	91,7	96,8	90,0	96,7
France	80,3	79,7	80,1	40,4	34,9	32,1	73,9	73,8	73,4	80,4	81,7	81,4	80,2	79,2	77,3
Germany	65,8	57,9	53,5	56,4	53,9	53,9	66,7	64,5	63,9	40,0	35,7	35,7	66,0	58,6	54,4
Ireland	73,7	81,5	83,3	74,2	93,0	88,4	70,0	60,0	90,9	70,0	70,0	85,0	70,0	80,0	85,3
Italy	37,4	34,9	34,4	17,6	16,3	15,1	28,8	27,2	27,8	35,3	30,0	30,7	39,5	34,3	33,3
Netherlands	72,0	60,5	77,3	50,0	40,7	46,0	67,7	56,0	73,7	87,2	59,5	70,0	71,5	<b>71,5</b>	<b>71,5</b>
Poland	40,9	40,9	40,9	3,2	3,2	4,6	20,4	20,4	22,0	22,0	22,0	22,1	40,9	40,9	40,2
Portugal	78,8	80,0	82,0	25,0	24,8	26,4	62,3	63,9	61,4	29,3	26,3	26,7	82,2	86,4	85,3
Slovakia	64,2	58,3	60,1	6,2	5,9	6,1	31,9	32,1	32,1	47,6	54,8	58,6	67,8	61,2	64,1
Spain	81,4	79,8	77,3	84,8	85,6	54,2	69,9	71,1	69,6	-	-	75,0	81,4	<b>81,4</b>	78,8
Sweden	82,1	81,8	<b>87,9</b>	82,5	81,6	81,6	80,0	79,8	79,8	-	-	-	-	-	-
United Kingdom	91,1	91,1	91,6	19,0	19,0	18,0	92,9	92,6	92,4	86,1	85,3	85,3	88,8	88,8	88,8
<b>Average EU</b>	<b>73,6</b>	<b>72,0</b>	<b>73,6</b>	<b>43,4</b>	<b>43,6</b>	<b>41,2</b>	<b>63,2</b>	<b>62,5</b>	<b>65,3</b>	<b>65,5</b>	<b>62,2</b>	<b>64,8</b>	<b>72,8</b>	<b>72,0</b>	<b>73,3</b>
Israel	70,5	68,2	72,7	18,3	18,3	19,2	62,3	61,9	58,1	61,5	60,7	60,7	72,0	71,7	72,2
Norway	90,7	90,0	92,0	66,2	64,7	71,1	77,8	75,9	79,9	78,3	80,6	82,1	93,7	94,3	91,8
Switzerland	94,8	94,9	95,2	-	-	-	-	-	-	-	-	-	-	-	-
Turkey	60,2	59,6	60,0	21,0	16,3	15,4	40,2	38,3	37,6	52,0	50,8	52,7	60,2	59,3	60,0
<b>Average ERMCO</b>	<b>74,7</b>	<b>73,2</b>	<b>74,9</b>	<b>42,1</b>	<b>41,9</b>	<b>40,3</b>	<b>62,7</b>	<b>61,9</b>	<b>64,2</b>	<b>65,2</b>	<b>62,5</b>	<b>64,8</b>	<b>73,2</b>	<b>72,5</b>	<b>73,5</b>
Russia	11,1	10,0	10,0	8,3	6,9	6,9	6,7	6,0	6,0	1,9	2,1	2,1	12,0	11,1	11,1
USA	<b>64,6</b>	<b>59,9</b>	<b>59,1</b>	<b>44,4</b>	<b>44,4</b>	<b>52,0</b>	<b>59,3</b>	<b>59,3</b>	<b>72,7</b>	<b>59,3</b>	<b>59,3</b>	<b>63,6</b>	<b>64,0</b>	<b>64,0</b>	<b>66,7</b>
Japan	89,5	88,2	87,5	78,5	78,5	80,0	75,7	76,3	75,8	85,7	85,6	86,4	-	-	83,3

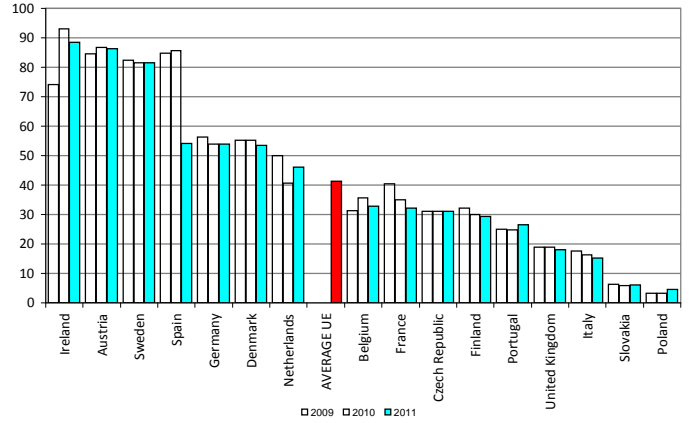
Legend: data in bold are estimated



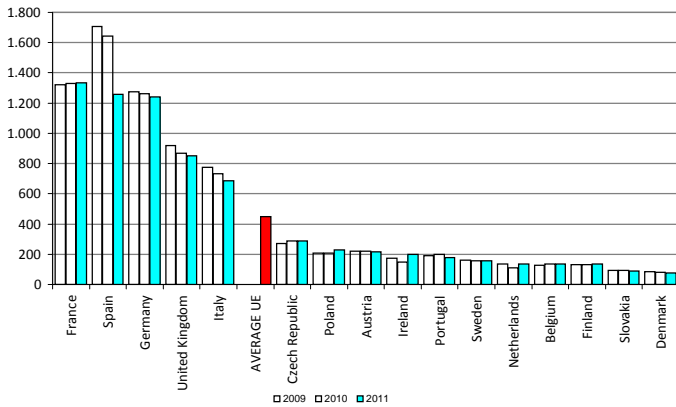
**Producers - ERMCO Members**



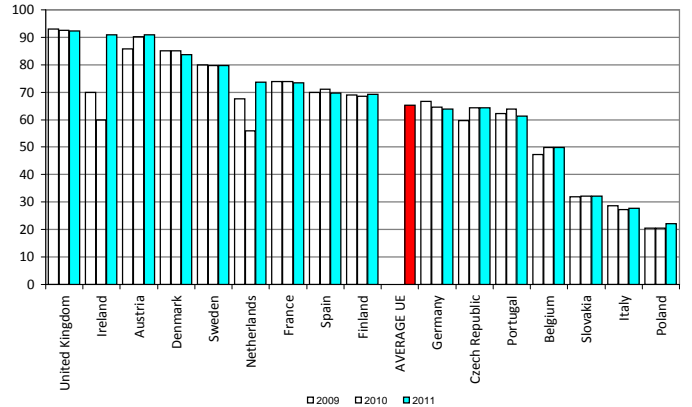
**Producers - ERMCO Members as % of total**



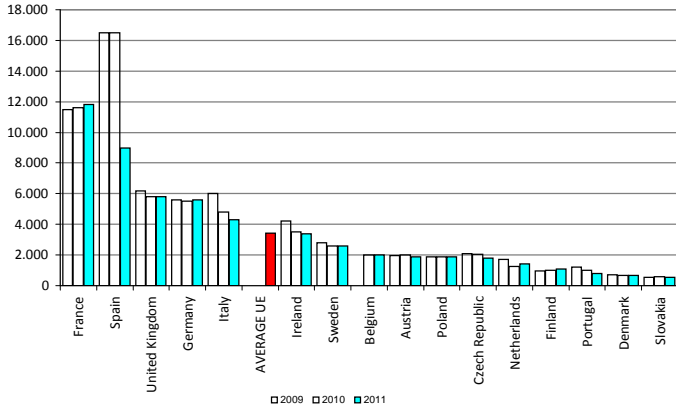
**Plants - ERMCO Members**



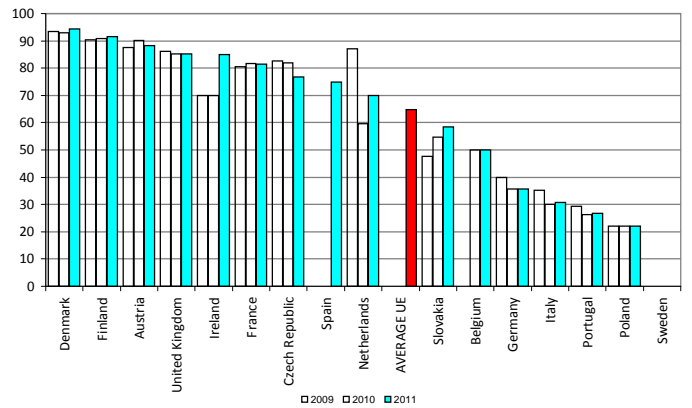
**Plants - ERMCO Members as % of total**



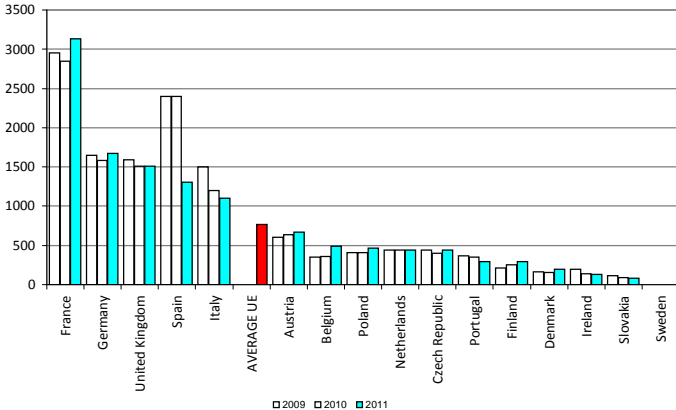
**Employees - ERMCO Members**



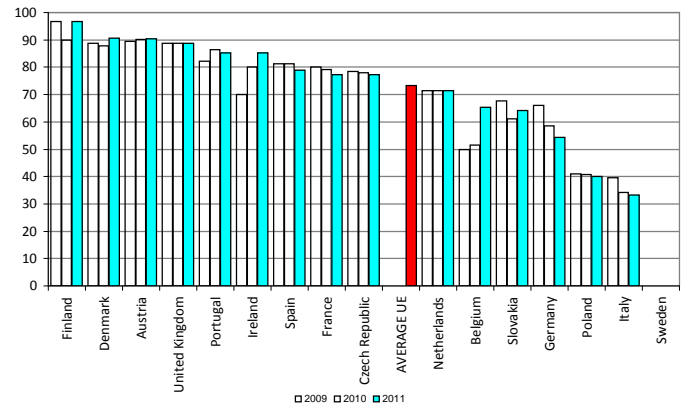
**Employees - ERMCO Members as % of total**



**Turnover - ERMCO Members**



**Turnover - ERMCO Members as % of total**

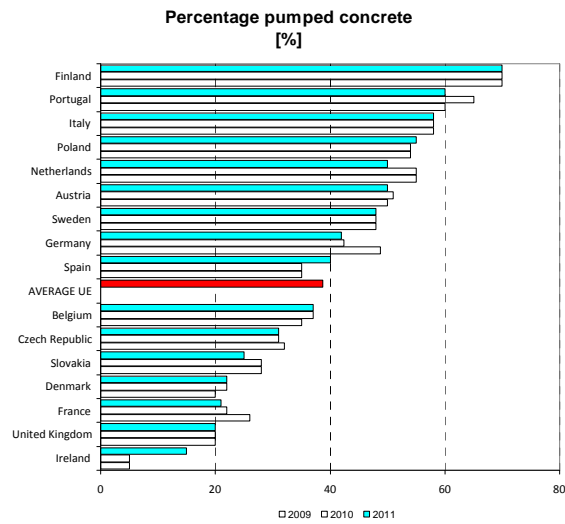
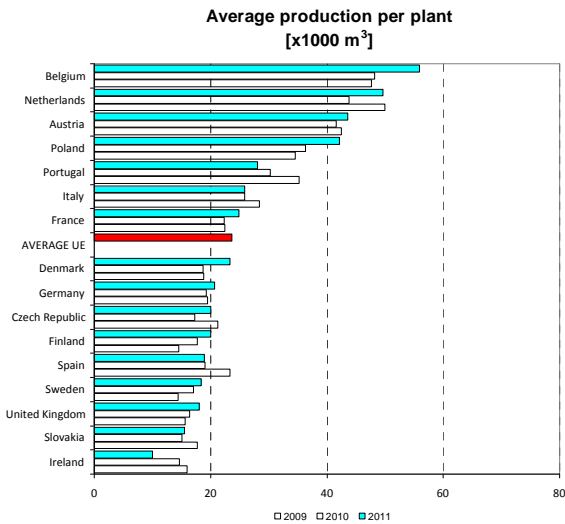


**TABLE 6**  
Product development (ERMCO Memers only)

Country	Production millions of m <sup>3</sup>			Method of Production % of total				Average production per plant - x1000 m <sup>3</sup>			Pumped Concrete % of total		
	2009	2010	2011	Central Mixing		Dry Batching		2009	2010	2011	2009	2010	2011
				2010	2011	2010	2011						
Austria	9,30	9,20	9,50	100	100	0	0	42,466	41,629	43,578	50	51	50
Belgium	6,00	6,50	7,55	100	100	0	0	47,619	48,148	55,926	35	37	37
Czech Republic	5,73	5,00	5,80	95	95	5	5	21,286	17,241	20,069	32	31	31
Denmark	1,60	1,50	1,80	100	100	0	0	18,824	18,750	23,377	20	22	22
Finland	1,90	2,30	2,70	100	100	0	0	14,504	17,692	20,000	70	70	70
France	29,70	29,80	33,10	100	100	0	0	22,466	22,389	24,831	26	22	21
Germany	24,80	24,30	25,70	100	100	0	0	19,466	19,270	20,726	49	42	42
Ireland	2,80	2,20	2,00	60	60	40	40	16,000	14,667	10,000	5	5	15
Italy	22,00	19,00	17,80	1	2	99	98	28,351	25,886	25,910	58	58	58
Netherlands	6,70	4,90	6,80	98	98	2	2	50,000	43,750	49,635	55	55	50
Poland	7,23	7,60	9,70	100	99	0	1	34,603	36,364	42,174	54	54	55
Portugal	6,70	6,00	5,00	95	95	5	5	35,263	30,303	28,090	60	65	60
Slovakia	1,67	1,40	1,40	100	100	0	0	17,766	15,054	15,556	28	28	25
Spain	39,85	31,19	23,79	20	20	80	80	23,359	18,995	18,926	35	35	40
Sweden	2,30	2,70	2,90	100	100	0	0	14,375	17,089	18,354	48	48	48
United Kingdom	14,40	14,30	15,30	40	40	60	60	15,652	16,437	18,000	20	20	20
<b>Total/Average EU</b>	<b>182,68</b>	<b>167,89</b>	<b>170,84</b>	<b>68</b>	<b>72</b>	<b>32</b>	<b>28</b>	<b>23,450</b>	<b>22,050</b>	<b>23,682</b>	<b>40</b>	<b>39</b>	<b>39</b>
Israel	6,70	7,50	8,00	1	2	99	99	64,423	72,115	80,000	55	60	55
Norway	2,63	2,70	3,24	99	99	1	1	15,939	16,463	18,947	60	70	75
Switzerland	11,00	11,20	11,90	100	100	0	0	29,973	30,189	32,075	20	20	-
Turkey	40,00	47,50	54,00	95	97	5	3	117,647	138,484	152,113	83	80	80
<b>Total/Average ERMCO</b>	<b>243,01</b>	<b>236,79</b>	<b>247,98</b>	<b>73</b>	<b>77</b>	<b>27</b>	<b>23</b>	<b>27,722</b>	<b>27,547</b>	<b>30,201</b>	<b>47</b>	<b>47</b>	<b>47</b>
Russia	5,00	4,00	4,00	98	98	2	2	35,714	33,333	33,333	30	35	35
USA	157,00	118,00	120,00	20	20	80	80	39,250	29,500	30,000	30	40	40
Japan	77,00	75,00	77,00	100	100	0	0	25,839	25,809	27,247	63	65	65

Country	Production Yearly % change		Pumped Concrete Yearly % change		Average production per plant Yearly % change	
	2010 vs 2009	2011 vs 2010	2010 vs 2009	2011 vs 2010	2010 vs 2009	2011 vs 2010
	Austria	-1,1	3,3	1,0	-1,0	-2,0
Belgium	8,3	16,2	2,0	0,0	1,1	16,2
Czech Republic	-12,7	16,0	-1,0	0,0	-19,0	16,4
Denmark	-6,3	20,0	2,0	0,0	-0,4	24,7
Finland	21,1	17,4	0,0	0,0	22,0	13,0
France	0,3	11,1	-4,0	-1,0	-0,3	10,9
Germany	-2,0	5,8	-6,4	-0,4	-1,0	7,6
Ireland	-21,4	-9,1	0,0	10,0	-8,3	-31,8
Italy	-13,6	-6,3	0,0	0,0	-8,7	0,1
Netherlands	-26,9	38,8	0,0	-5,0	-12,5	13,5
Poland	5,1	27,6	0,0	1,0	5,1	16,0
Portugal	-10,4	-16,7	5,0	-5,0	-14,1	-7,3
Slovakia	-16,2	0,0	0,0	-3,0	-15,3	3,3
Spain	<b>-21,7</b>	<b>-23,7</b>	<b>0,0</b>	<b>5,0</b>	<b>-18,7</b>	<b>-0,4</b>
Sweden	17,4	7,4	0,0	0,0	18,9	7,4
United Kingdom	-0,7	7,0	0,0	0,0	5,0	9,5
<b>Average EU</b>	<b>-8,1</b>	<b>1,8</b>	<b>-1,4</b>	<b>0,1</b>	<b>-6,0</b>	<b>7,4</b>
Israel	11,9	6,7	5,0	-5,0	11,9	10,9
Norway	2,7	20,0	10,0	5,0	3,3	15,1
Switzerland	1,8	6,3	0,0	-	0,7	6,3
Turkey	18,8	13,7	-3,0	0,0	17,7	9,8
<b>Average ERMCO</b>	<b>-2,6</b>	<b>4,7</b>	<b>0,3</b>	<b>-0,2</b>	<b>-0,6</b>	<b>9,6</b>
Russia	-20,0	0,0	5,0	0,0	-6,7	0,0
USA	-24,8	1,7	<b>10,0</b>	0,0	-24,8	1,7
Japan	-2,6	2,7	2,0	0,0	-0,1	5,6

Legend: data in bold are estimated

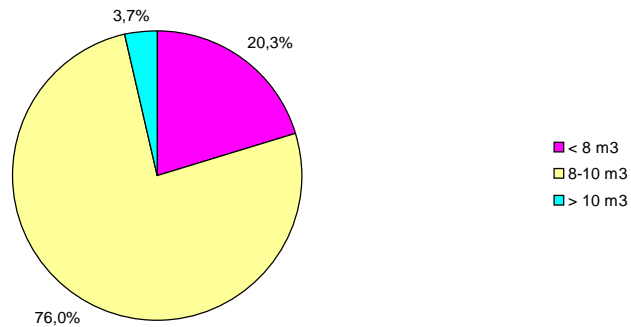


**TABLE 7**  
**Delivery method and vehicles (ERMCO members only)**

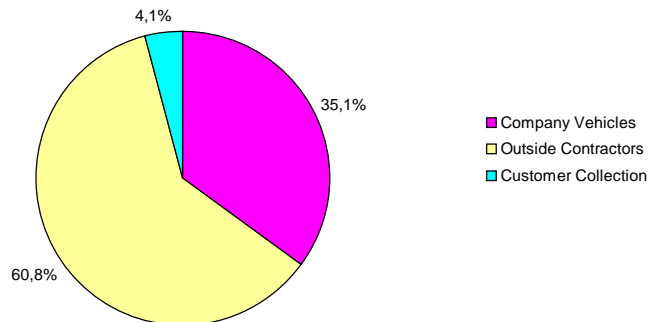
Country	Number of vehicles truck mixers			Vehicles by capacity (2011) %			Number of vehicles pumps			% Delivery method (2011)		
	2009	2010	2011	< 8 m <sup>3</sup>	8-10 m <sup>3</sup>	> 10 m <sup>3</sup>	2009	2010	2011	Company Vehicles	Outside Contractors	Customer Collection
Austria	1760	1715	1785	10	87	3	440	440	450	40	55	5
Belgium	1550	1550	1550	3	57	40	195	230	230	50	23	27
Czech Republic	468	465	384	50	50	0	153	115	113	41	41	18
Denmark	410	385	435	70	28	2	45	45	48	88	10	2
Finland	450	500	500	95	4	1	300	300	300	20	78	2
France	6300	6350	6450	7	87	6	1900	1800	1840	15	82	3
Germany	6500	7200	7600	9	87	4	1605	1603	1620	24	67	9
Ireland	800	550	525	10	90	0	14	<b>14</b>	<b>14</b>	70	30	0
Italy	14817	14000	12500	2	98	0	2500	2500	2400	42	58	0
Netherlands	1250	1250	1200	6	80	14	-	-	-	88	10	2
Poland	2916	2916	3066	11	88	1	700	700	720	37	55	8
Portugal	1650	1500	1100	10	90	0	360	350	280	10	90	0
Slovakia	<b>162</b>	250	220	65	35	0	35	60	60	44	46	10
Spain	10000	<b>10000</b>	5000	75	25	0	-	-	-	50	50	0
Sweden	820	820	820	10	80	10	300	300	300	20	80	0
United Kingdom	2400	2280	2280	92	8	0	-	-	0	15	80	5
<b>Total/Average EU</b>	<b>52253</b>	<b>51731</b>	<b>45415</b>	<b>20</b>	<b>76</b>	<b>4</b>	<b>8547</b>	<b>8457</b>	<b>8375</b>	<b>35</b>	<b>61</b>	<b>4</b>
Israel	1260	1390	1470	8	91	1	310	330	340	50	50	0
Norway	860	875	925	33,7	62,1	4,2	270	400	400	34	63	3
Switzerland	-	-	-	-	-	-	-	-	-	-	-	-
Turkey	8750	9700	10500	2	70	28	2250	2550	2900	70	29	1
<b>Total/Average ERMCO</b>	<b>63123</b>	<b>63696</b>	<b>58310</b>	<b>17</b>	<b>75</b>	<b>8</b>	<b>11377</b>	<b>11737</b>	<b>12015</b>	<b>42</b>	<b>55</b>	<b>3</b>
Russia	6200	5500	5500	80	15	5	-	-	-	80	20	0
USA	<b>67500</b>	<b>67500</b>	68000	92	8	0	-	-	7500	98	1	1
Japan	54171	50906	48611	100	0	0	10710	10675	9716	65	35	0

Legend: data in bold are estimated

**Vehicles by capacity**



**Delivery method**



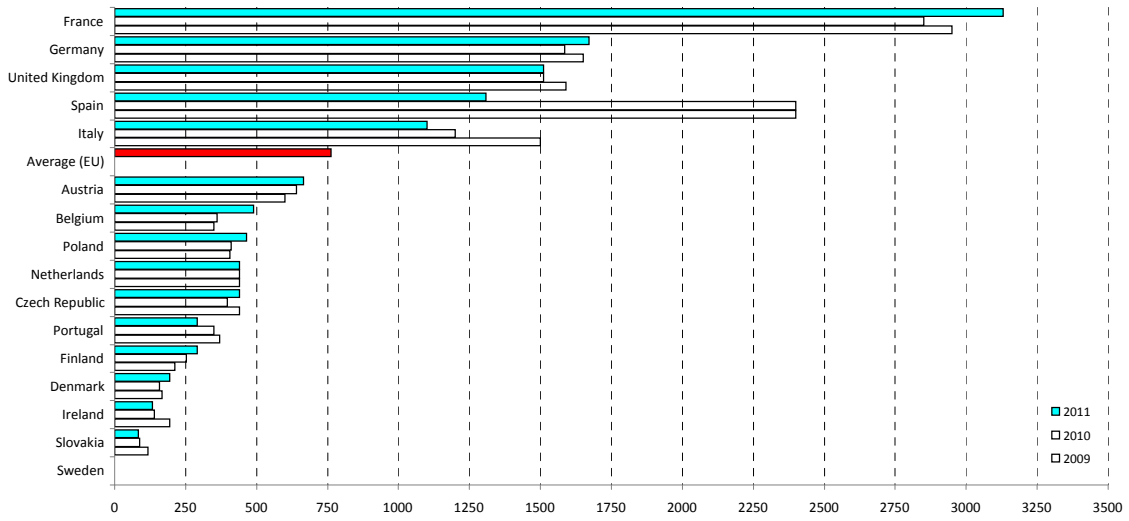
**TABLE 8**  
Sector development (ERMCO members only)

Country	Production millions of m <sup>3</sup>			Turnover including delivery excluding tax - millions of €			Employees			Turnover vs Production €/m <sup>3</sup>			Turnover vs Employees x1000 € / employee		
	2009	2010	2011	2009	2010	2011	2009	2010	2011	2009	2010	2011	2009	2010	2011
Austria	9,30	9,20	9,50	600	640	665	1960	1985	1900	64,516	69,565	70,000	306,122	322,418	350,000
Belgium	6,00	6,50	7,55	350	360	490	-	2000	2000	58,333	55,385	64,901	-	180,000	245,000
Czech Republic	5,73	5,00	5,80	440	398	440	2068	2026	1804	76,842	79,600	75,862	212,766	196,446	243,902
Denmark	1,60	1,50	1,80	166	158	195	700	650	680	103,750	105,333	108,333	237,143	243,077	286,765
Finland	1,90	2,30	2,70	213	252	290	950	1000	1100	112,105	109,565	107,407	224,211	252,000	263,636
France	29,70	29,80	33,10	2950	2850	3130	11500	11600	11800	99,327	95,638	94,562	256,522	245,690	265,254
Germany	24,80	24,30	25,70	1651	1585	1670	5600	5500	5600	66,573	65,226	64,981	294,821	288,182	298,214
Ireland	2,80	2,20	2,00	194	140	133	4200	3500	3400	69,286	63,636	66,500	46,190	40,000	39,118
Italy	22,00	19,00	17,80	1500	1200	1100	6000	4800	4300	68,182	63,158	61,798	250,000	250,000	255,814
Netherlands	6,70	4,90	6,80	440	<b>440</b>	<b>440</b>	1700	1250	1400	65,672	89,796	64,706	258,824	352,000	314,286
Poland	7,23	7,60	9,70	405	410	464	1880	1880	1900	56,000	54,000	47,814	215,424	218,298	244,105
Portugal	6,70	6,00	5,00	370	350	290	1200	1000	800	55,224	58,333	58,000	308,333	350,000	362,500
Slovakia	1,67	1,40	1,40	118	89	83	524	575	527	70,599	63,500	59,214	225,000	154,609	157,306
Spain	39,85	31,19	23,79	2400	<b>2400</b>	1309	16500	<b>16500</b>	9000	60,226	<b>76,948</b>	55,023	145,455	<b>145,455</b>	145,444
Sweden	2,30	2,70	2,90	-	-	-	2800	2600	2600	-	-	-	-	-	-
United Kingdom	14,40	14,30	15,30	1590	1510	1510	6200	5800	5800	110,417	105,594	98,693	256,452	260,345	260,345
<b>Total/Average EU</b>	<b>182,68</b>	<b>167,89</b>	<b>170,84</b>	<b>13387</b>	<b>12782</b>	<b>12209</b>	<b>63782</b>	<b>62666</b>	<b>54611</b>	<b>73,281</b>	<b>76,135</b>	<b>71,463</b>	<b>209,885</b>	<b>203,975</b>	<b>223,558</b>
Israel	6,70	7,50	8,00	36	410	455	800	850	850	5,373	54,667	56,875	45,000	482,353	535,294
Norway	2,63	2,70	3,24	357	379	490	1410	1450	1600	135,741	140,370	151,235	253,191	261,379	306,250
Switzerland	11,00	11,20	11,90	-	-	-	-	-	-	-	-	-	-	-	-
Turkey	40,00	47,50	54,00	1400	1660	1890	13000	13200	14500	35,000	34,947	35,000	107,692	125,758	130,345
<b>Total/Average ERMCO</b>	<b>243,01</b>	<b>236,79</b>	<b>247,98</b>	<b>15180</b>	<b>15231</b>	<b>15044</b>	<b>78992</b>	<b>78166</b>	<b>71561</b>	<b>62,467</b>	<b>64,324</b>	<b>60,665</b>	<b>192,170</b>	<b>194,858</b>	<b>210,222</b>
Russia	5,00	4,00	4,00	600	500	500	860	800	800	120,000	125,000	125,000	697,674	625,000	625,000
USA	157,00	118,00	120,00	<b>14400</b>	<b>14400</b>	13000	80000	<b>80000</b>	70000	91,720	<b>122,034</b>	108,333	180,000	<b>180,000</b>	185,714
Japan	77,00	75,00	77,00	-	-	8782	38727	36380	34810	-	-	114,052	-	-	252,284

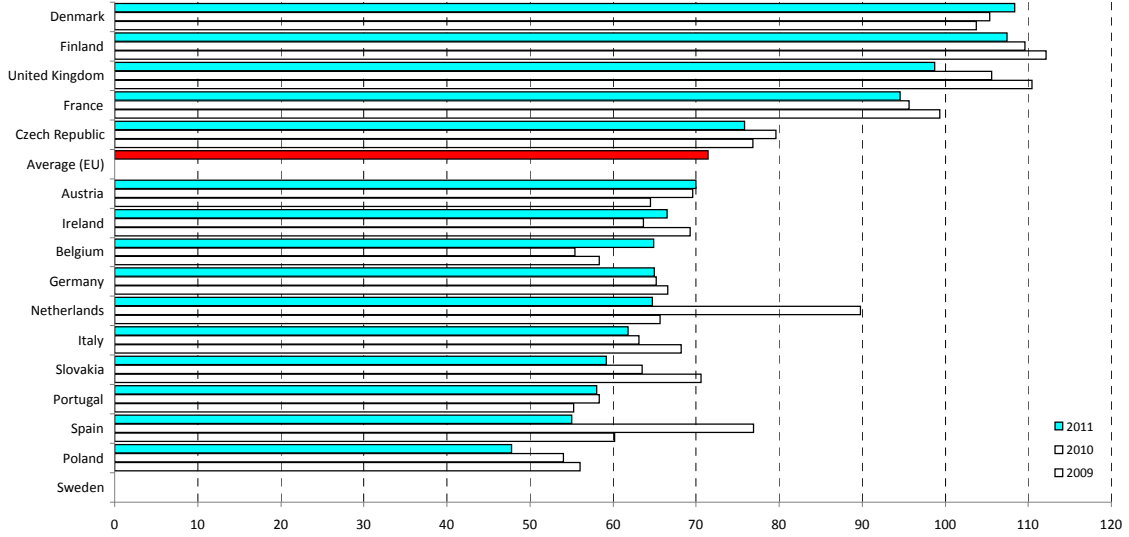
Country	Production Yearly % change		Turnover including delivery Yearly % change		Employees Yearly % change		Turnover vs Production Yearly % change		Turnover vs Employees Yearly % change	
	2010 vs 2009	2011 vs 2010	2010 vs 2009	2011 vs 2010	2010 vs 2009	2011 vs 2010	2010 vs 2009	2011 vs 2010	2010 vs 2009	2011 vs 2010
Austria	-1,1	3,3	6,7	3,9	1,3	-4,3	7,8	0,6	5,3	8,6
Belgium	8,3	16,2	2,9	36,1	-	0,0	-5,1	17,2	-	36,1
Czech Republic	-12,7	16,0	-9,5	10,6	-2,0	-11,0	3,6	-4,7	-7,7	24,2
Denmark	-6,3	20,0	-4,8	23,4	-7,1	4,6	1,5	2,8	2,5	18,0
Finland	21,1	17,4	18,3	15,1	5,3	10,0	-2,3	-2,0	12,4	4,6
France	0,3	11,1	-3,4	9,8	0,9	1,7	-3,7	-1,1	-4,2	8,0
Germany <sup>2</sup>	-2,0	5,8	-4,0	5,4	-1,8	1,8	-2,0	-0,4	-2,3	3,5
Ireland	-21,4	-9,1	-27,8	-5,0	-16,7	-2,9	-8,2	4,5	-13,4	-2,2
Italy	-13,6	-6,3	-20,0	-8,3	-20,0	-10,4	-7,4	-2,2	0,0	2,3
Netherlands	-26,9	38,8	<b>0,0</b>	<b>0,0</b>	-26,5	12,0	36,7	-27,9	36,0	-10,7
Poland	5,1	27,6	1,3	13,0	0,0	1,1	-3,6	-11,5	1,3	11,8
Portugal	-10,4	-16,7	-5,4	-17,1	-16,7	-20,0	5,6	-0,6	13,5	3,6
Slovakia	-16,2	0,0	-24,6	-6,7	9,7	-8,3	-10,1	-6,7	-31,3	1,7
Spain	-21,7	-23,7	<b>0,0</b>	<b>-45,5</b>	<b>0,0</b>	<b>-45,5</b>	<b>27,8</b>	<b>-28,5</b>	<b>0,0</b>	<b>0,0</b>
Sweden	17,4	7,4	-	-	-7,1	0,0	-	-	-	-
United Kingdom	-0,7	7,0	-5,0	0,0	-6,5	0,0	-4,4	-6,5	1,5	0,0
<b>Average EU</b>	<b>-8,1</b>	<b>1,8</b>	<b>-4,5</b>	<b>-4,5</b>	<b>-1,7</b>	<b>-12,9</b>	<b>3,9</b>	<b>-6,1</b>	<b>-2,8</b>	<b>9,6</b>
Israel	11,9	6,7	1038,9	11,0	6,3	0,0	917,4	4,0	971,9	11,0
Norway	2,7	20,0	6,2	29,3	2,8	10,3	3,4	7,7	3,2	17,2
Switzerland	1,8	6,3	-	-	-	-	-	-	-	-
Turkey	18,8	13,7	18,6	13,9	1,5	9,8	-0,2	0,2	16,8	3,6
<b>Average ERMCO</b>	<b>-2,6</b>	<b>4,7</b>	<b>0,3</b>	<b>-1,2</b>	<b>-1,0</b>	<b>-8,4</b>	<b>3,0</b>	<b>-5,7</b>	<b>1,4</b>	<b>7,9</b>
Russia	-20,0	0,0	-16,7	0,0	-7,0	0,0	4,2	0,0	-10,4	0,0
USA	-24,8	1,7	<b>0,0</b>	<b>-9,7</b>	<b>0,0</b>	<b>-12,5</b>	<b>33,1</b>	<b>-11,2</b>	<b>0,0</b>	<b>3,2</b>
Japan	-2,6	2,7	-	-	-6,1	-4,3	-	-	-	-

Legend: data in bold are estimated

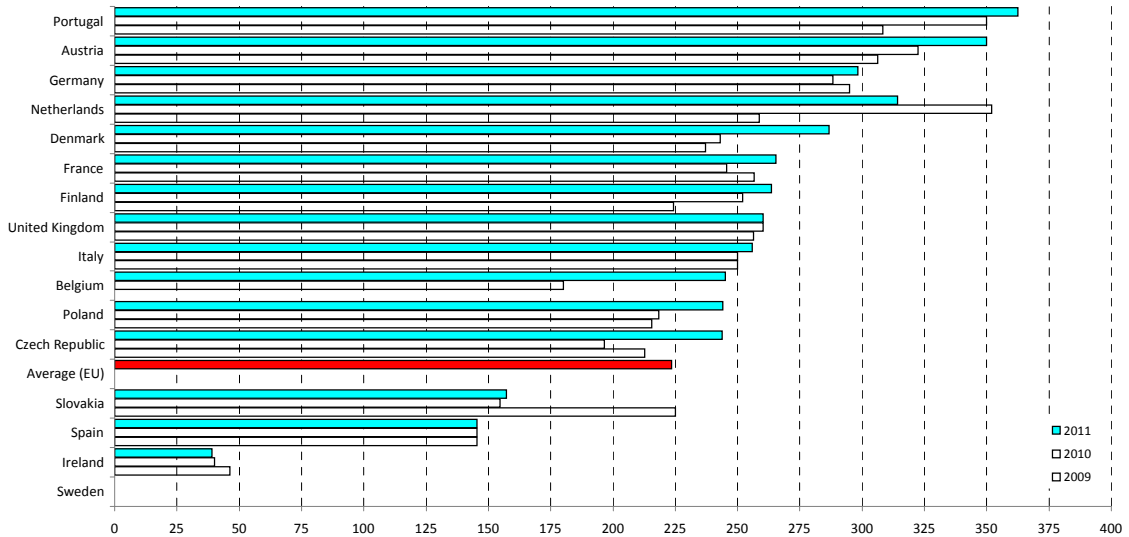
**Turnover including delivery**  
[millions of €]



**Turnover vs Production**  
[€/m³]



**Turnover vs Employees**  
[x1000 € / employee]





# ERMCO

EUROPEAN READY MIXED CONCRETE ORGANIZATION  
ASSOCIATION EUROPEENNE DU BETON PRET A L'EMPLOI  
EUROPÄISCHER TRANSPORTBETONVERBAND

Boulevard du Souverain 68  
B-1170 Brussels  
VAT BE 864 250 204

Tel: + 32 (2) 64 55 212  
Fax: + 32 (2) 73 51 467  
e-mail: [secretariat@ermco.eu](mailto:secretariat@ermco.eu)